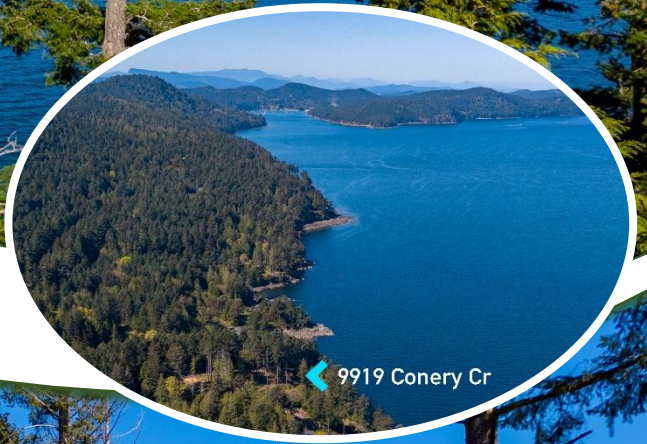


OCEANFRONT DREAM ACREAGE



9919 CONERY CRESCENT



9919 Conery Cr



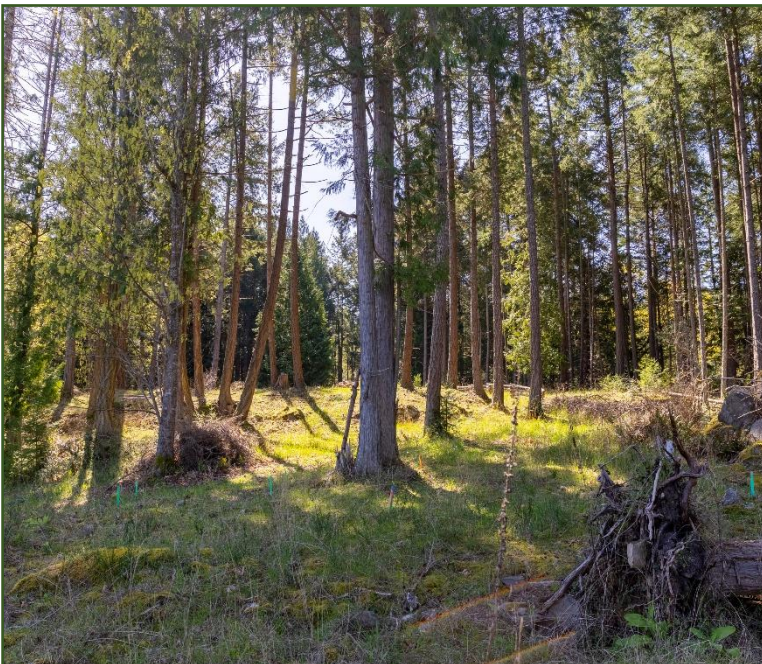


9919 CONERY CRESCENT

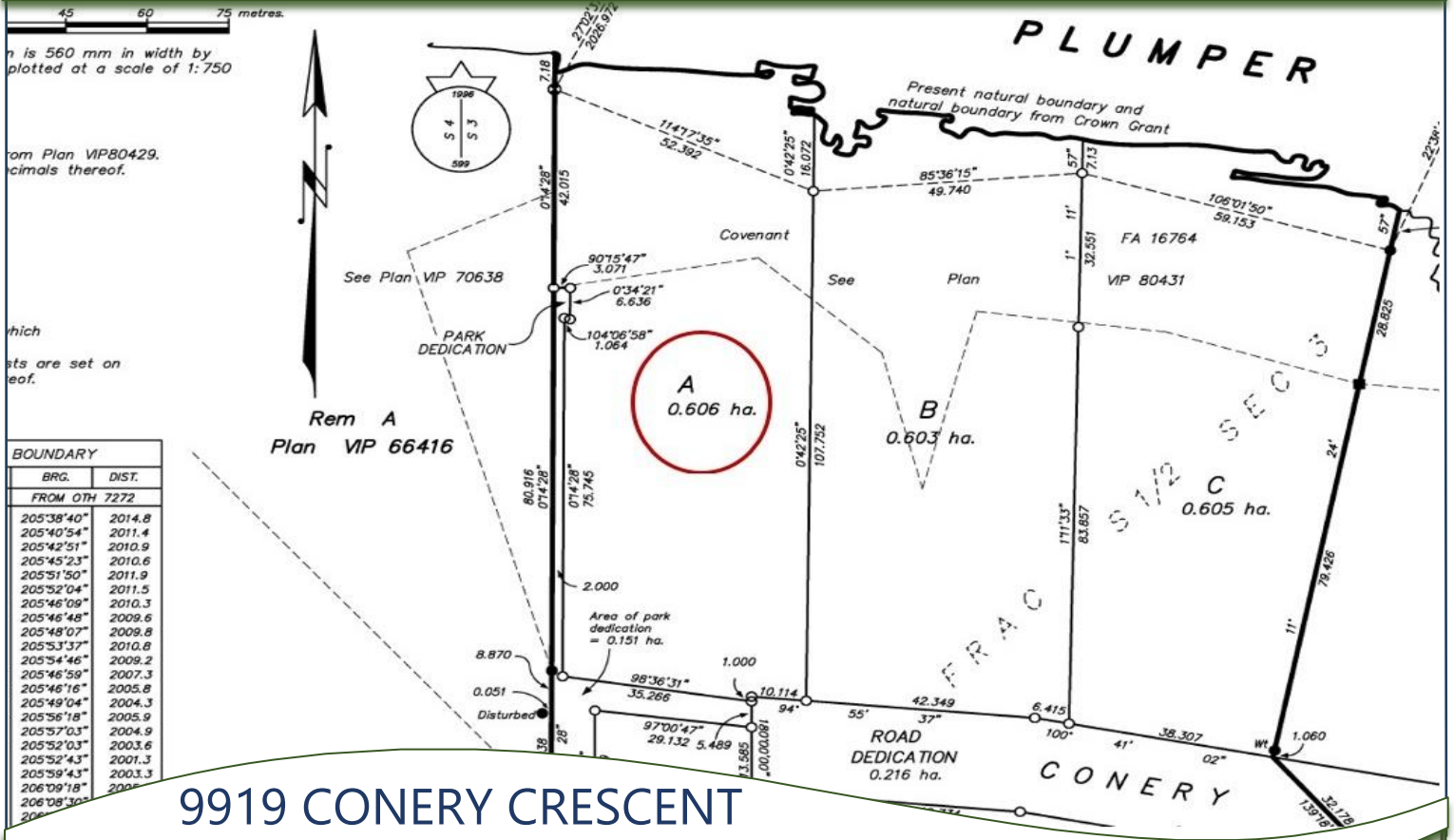
DRILLED WELL ~ SEPTIC NEEDED ~ 1.5 ACRES



Discover your opportunity to own approximately 1.5 acres of private, sunny, level oceanfront land on beautiful South Pender Island. This exceptional property offers breathtaking, sun-soaked water & mountain views - an ideal backdrop for your future Westcoast Dream Home. The current owners have invested years into thoughtful planning, so much of the groundwork is already in place. An established driveway leads to multiple prime building sites. Custom-designed house plans & renderings for a Westcoast inspired home & workshop are available to serious buyers, providing a valuable head start. A septic system has been designed and received preliminary approval, significantly simplifying the building process. Surrounded by natural beauty & offering incredible potential, this is more than just land - it's the foundation for the lifestyle you've been envisioning. Come walk this enchanting property to experience the possibilities here!



PLOT PLAN & AERIAL VIEW

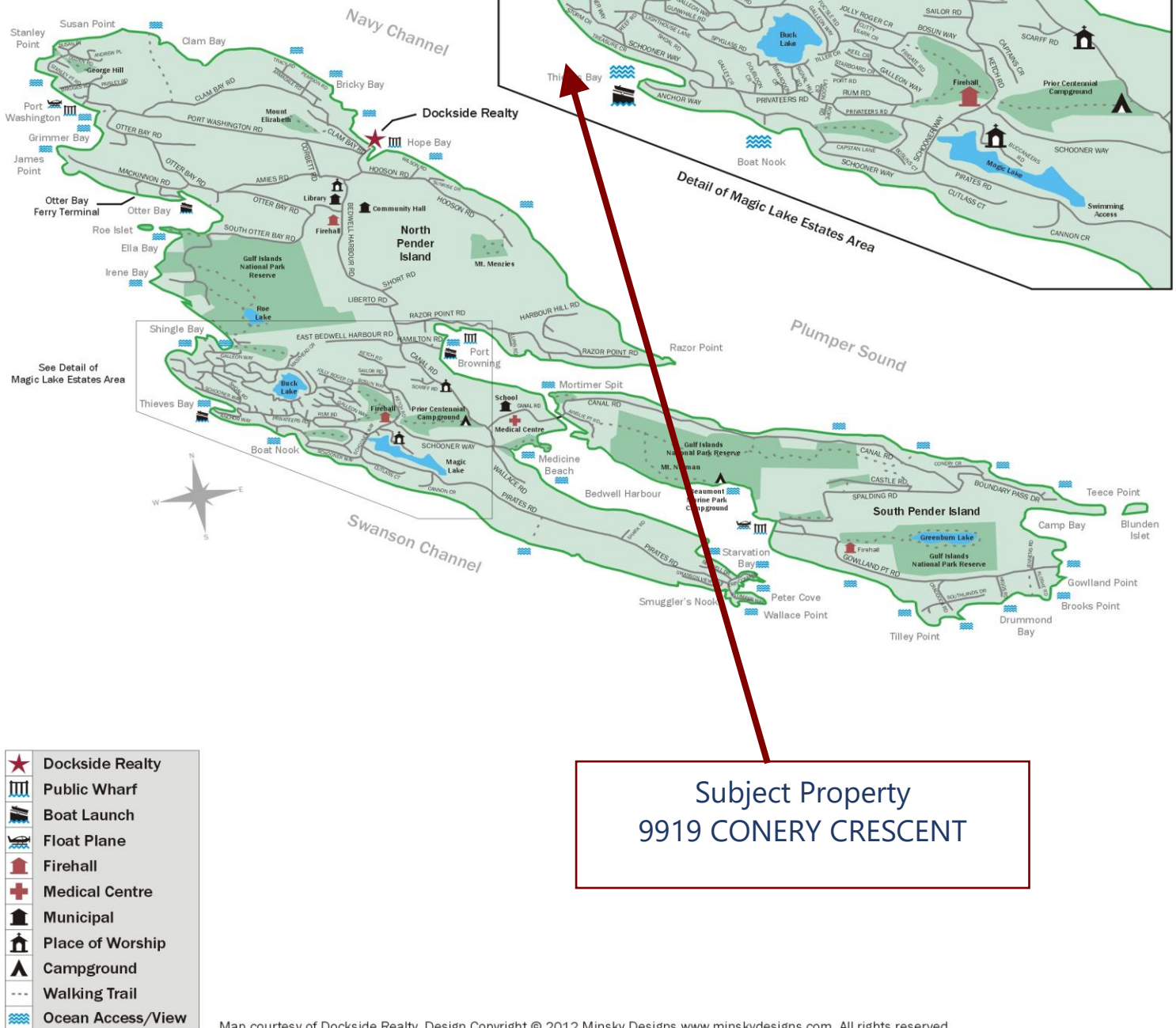


9919 CONERY CRESCENT

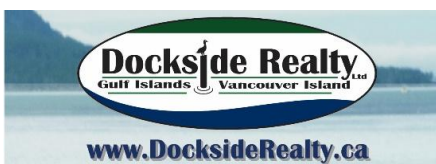


PENDER ISLAND MAP

Pender Islands British Columbia, Canada



DISCLAIMER: While every effort is made to provide reliable information, Dockside Realty Ltd. makes no representations or warranties as to the accuracy of this brochure. All measurements are approximate; the buyer is responsible for verifying all data provided.



Pender Island • Saturna Island • Vancouver Island
info@DocksideRealty.ca • 250-629-3166